

ICM – Internationales Congress Center München

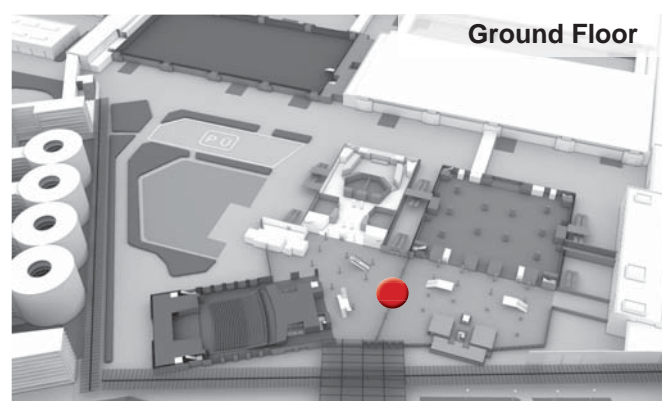
DETAILS FOYER GROUND FLOOR

including technical specifications

Areas/rooms	Area in m ²
Foyer Ground Floor	4,850 (North: 2,530, South: 2,275)

Communicative Heart with a Sophisticated Atmosphere

The ground floor of the foyer, which has 3,000 m² of usable exhibition space and is flooded with light, is the main entrance to and central meeting point at the ICM. Its open architecture and modern design elements come together to form a harmonious entity. The foyer can be partitioned to create two separate areas, each with one entrance, making it possible to hold two large-scale events at the same time. The foyer is ideal as a registration area, but it can also be used for exhibitions, banquets and other independent events.



Specifications	
Location	<ul style="list-style-type: none"> ▪ Direct vehicle access for deliveries ▪ No vehicles in foyer itself ▪ Forklifts may only be used by the exhibition center's freight forwarder ▪ The maximum load-bearing capacities of the passenger and freight elevators must be observed at all times ▪ Passenger elevators may not be used to transport freight
Suitable for	<ul style="list-style-type: none"> ▪ Registration, exhibitions, catering
Size / capacity	<ul style="list-style-type: none"> ▪ 4,850 m² (North: 2,530 m², South: 2,275 m²)
Special features	<ul style="list-style-type: none"> ▪ Daylight/shade system ▪ Can be partitioned into two separate areas, each with its own entrance ▪ Natural stone floor ▪ Usable exhibition space: approximately 3,000 m², depending on number of visitors ▪ Maximum structure height: 2.10 m - 10 m, depending on stand location ▪ Walls: Stuccolustro wall paneling ▪ Permissible floor load: 1.0 t/m² (10 kN/m²)

ICM – Internationales Congress Center München

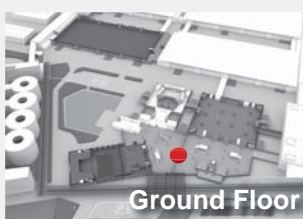
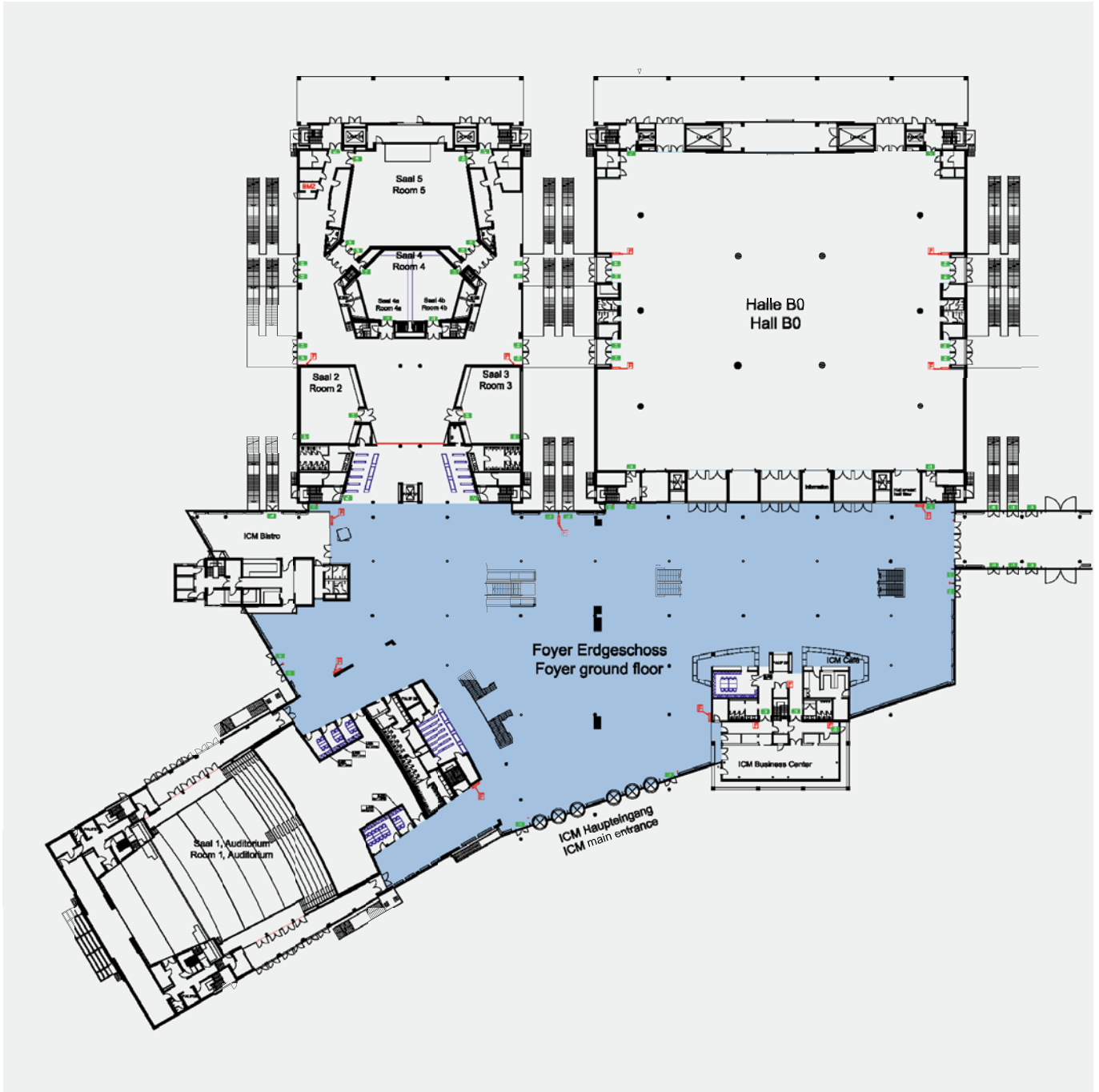
DETAILS FOYER GROUND FLOOR

Specifications

- | | |
|--------------------|--|
| Structural details | <ul style="list-style-type: none">■ Permissible point load, 30 cm x 30 cm: 2.1 t■ Suspension points in foyer: none■ Entrance gates, size: max. 3 m wide x 4 m high via north foyer■ Entrance gates, number: 1 via north foyer, gate 21 |
| Utilities | <ul style="list-style-type: none">■ Lighting: Daylight/400 Lux/m²■ Ventilation systems: partially air-conditioned■ Utility ducts: none, grid of recessed floor outlets■ Water: not available■ Waste water: not available■ Compressed air: not available■ Electricity: max. 40 KW (63 A CEE per connection)■ System telecom connections: telephone/fax analog■ External telecom connections: ISDN, T-DSL 1000/2000■ Network: Ethernet/RJ-45 static IP■ Cable TV connections: Digital broadband network (DVB-C) |

ICM – Internationales Congress Center München

OVERVIEW FOYER GROUND FLOOR



- F Extinguisher
- Escape route

Area in m²
4,850 (North: 2,530, South: 2,275)

ICM – Internationales Congress Center München

FOYER GF: EMPTY





Area in m²

4,850

Exhibition Terms and Conditions:

- Exhibition layout with sufficient emergency aisles between the hatched areas
- Corridors at least every 10 meters and at least 2 meters wide
 - Fire extinguishing equipment and emergency escape routes must be kept clear at all times, even during setup and dismantling
- Dimensions must be independently verified on location



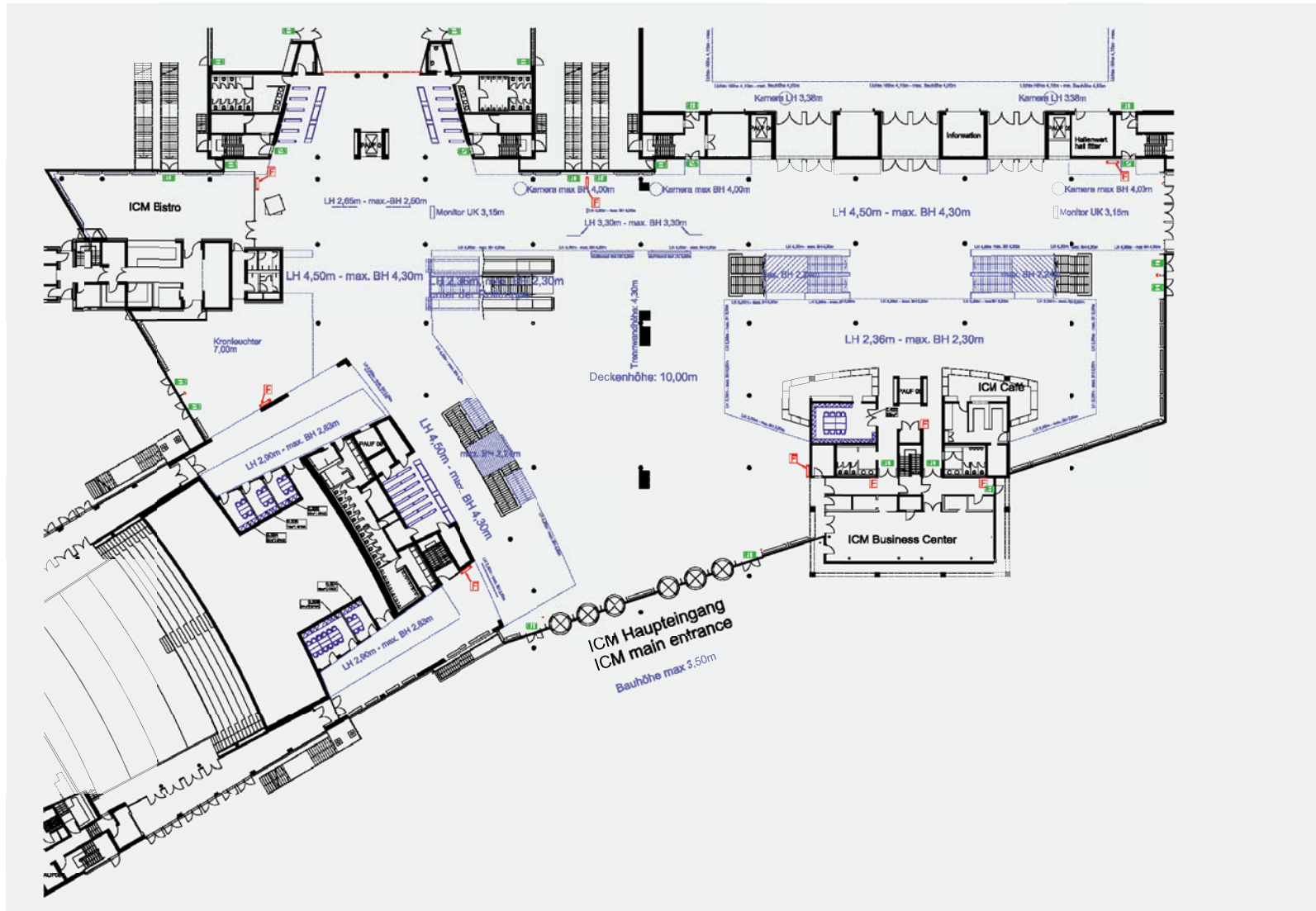
Extinguisher 
 Escape route 

Last update: 22.06.2012

Disclosure to third parties only permitted with written authorization. All specifications must be independently verified on location!

ICM – Internationales Congress Center München

FOYER GF: EMPTY INCL. BUILDING HEIGHT

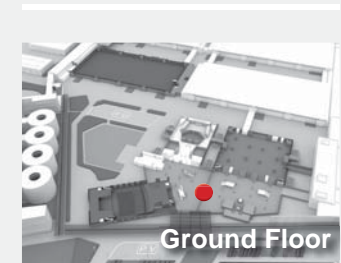




Area in m²

4,850

Exhibition Terms and Conditions:

- Exhibition layout with sufficient emergency aisles between the hatched areas
- Corridors at least every 10 meters and at least 2 meters wide
- Fire extinguishing equipment and emergency escape routes must be kept clear at all times, even during setup and dismantling
- Dimensions must be independently verified on location



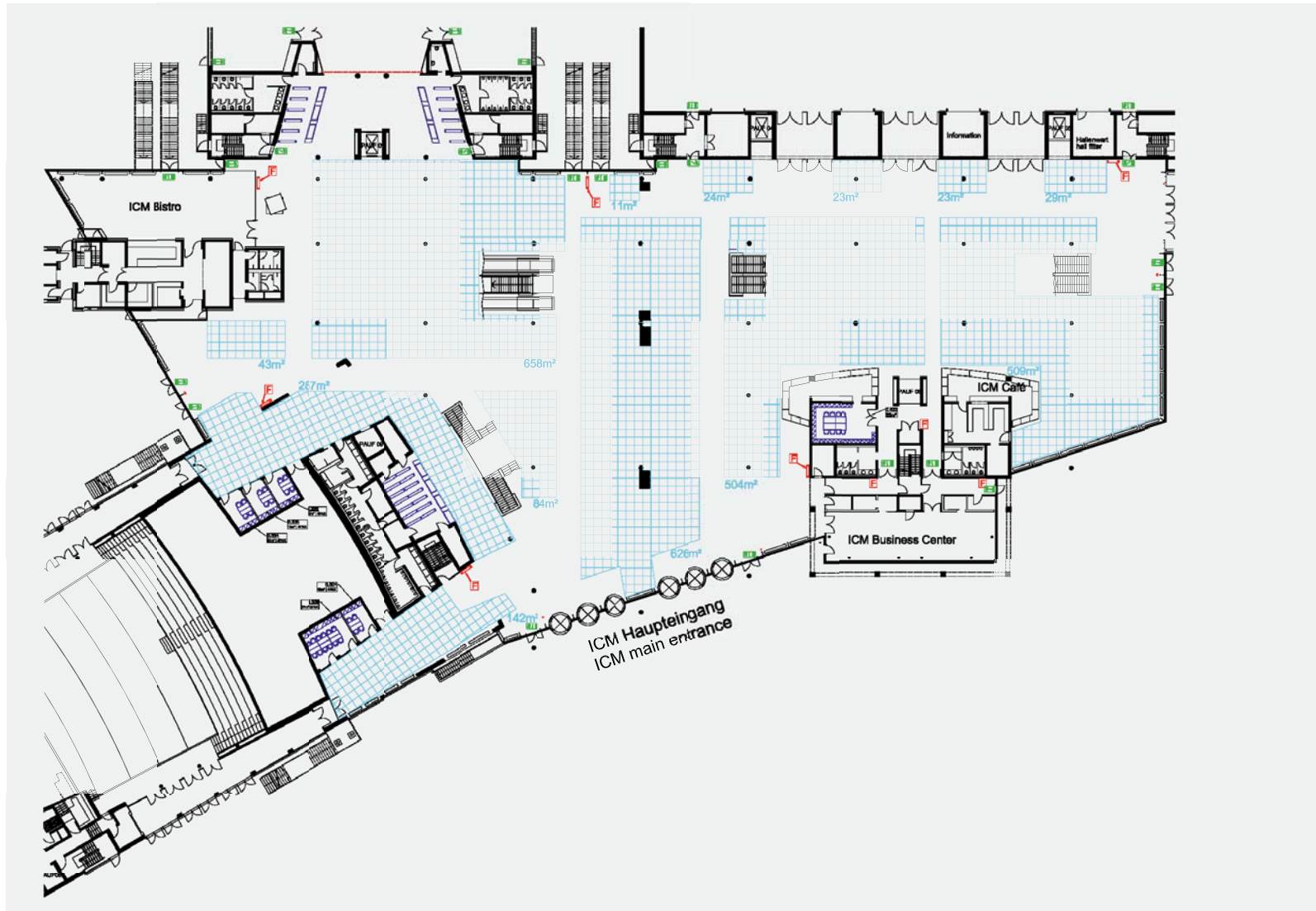
Extinguisher 
Escape route 

Last update: 22.06.2012

Disclosure to third parties only permitted with written authorization. All specifications must be independently verified on location!

ICM – Internationales Congress Center München

FOYER GF: 1,500 VISITORS





Visitors	Area* in m ²
1,500	2,956

* As emergency escape routes, all remaining space must be kept clear at all times.

Exhibition Terms and Conditions:

- Exhibition layout with sufficient emergency aisles between the hatched areas
 - Corridors at least every 10 meters and at least 2 meters wide
 - Fire extinguishing equipment and emergency escape routes must be kept clear at all times, even during setup and dismantling
- Dimensions must be independently verified on location

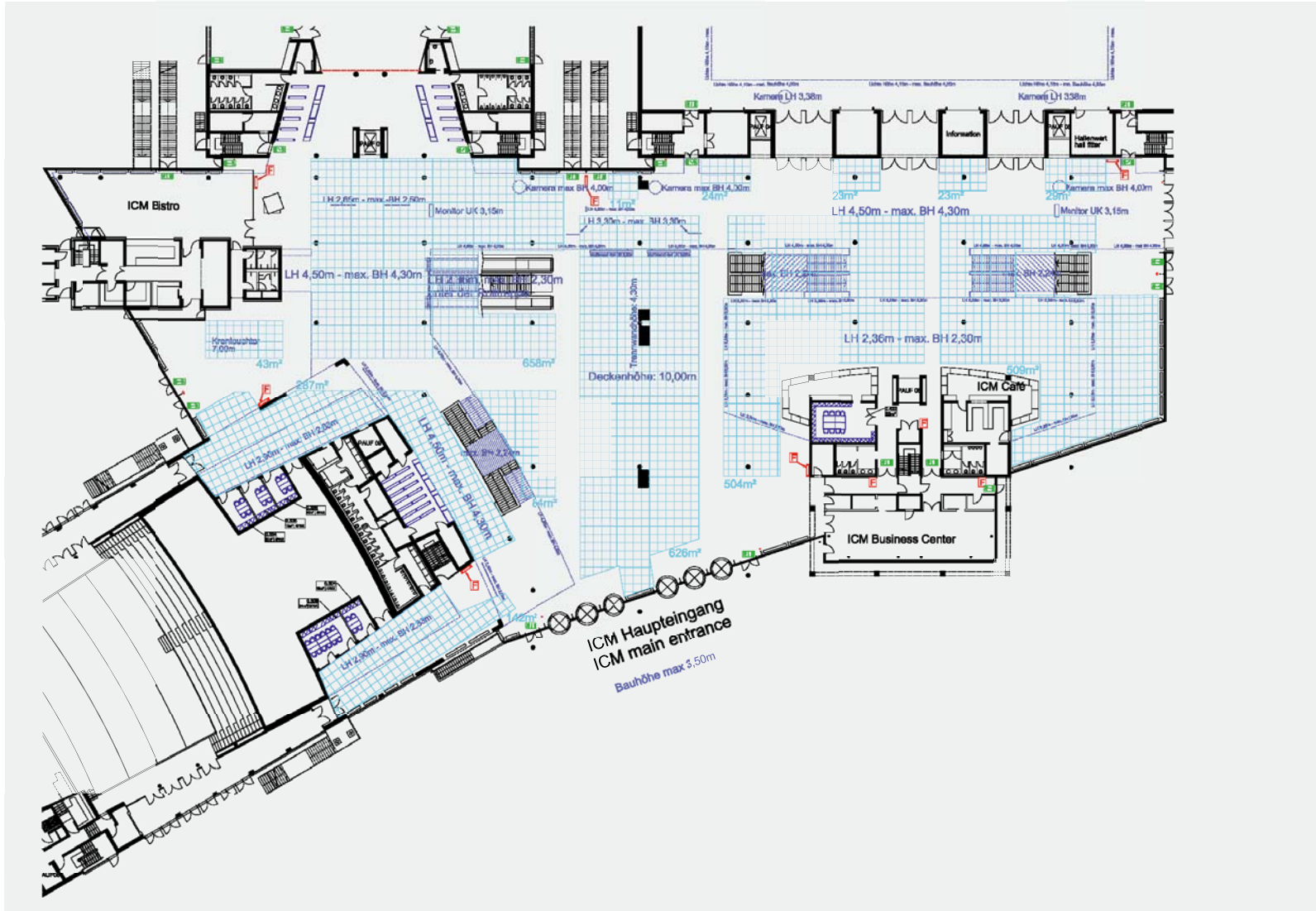


Extinguisher 
 Escape route 

Last update: 22.06.2012
 Disclosure to third parties only permitted with written authorization. All specifications must be independently verified on location!

ICM – Internationales Congress Center München

FOYER GF: 1,500 VISITORS INCL. BUILDING HEIGHT

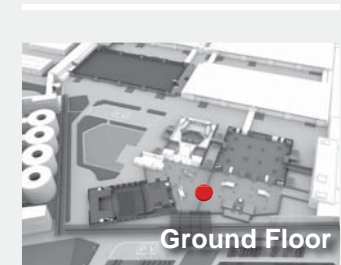




Visitors	Area* in m ²
1,500	2,956

* As emergency escape routes, all remaining space must be kept clear at all times.

Exhibition Terms and Conditions:

- Exhibition layout with sufficient emergency aisles between the hatched areas
- Corridors at least every 10 meters and at least 2 meters wide
- Fire extinguishing equipment and emergency escape routes must be kept clear at all times, even during setup and dismantling
- Dimensions must be independently verified on location



Extinguisher 
 Escape route 

Last update: 22.06.2012

Disclosure to third parties only permitted with written authorization. All specifications must be independently verified on location!

ICM – Internationales Congress Center München

FOYER GF: 2,000 VISITORS





Visitors	Area* in m ²
2,000	2,644

* As emergency escape routes, all remaining space must be kept clear at all times.

Exhibition Terms and Conditions:

- Exhibition layout with sufficient emergency aisles between the hatched areas
- Corridors at least every 10 meters and at least 2 meters wide
- Fire extinguishing equipment and emergency escape routes must be kept clear at all times, even during setup and dismantling
- Dimensions must be independently verified on location



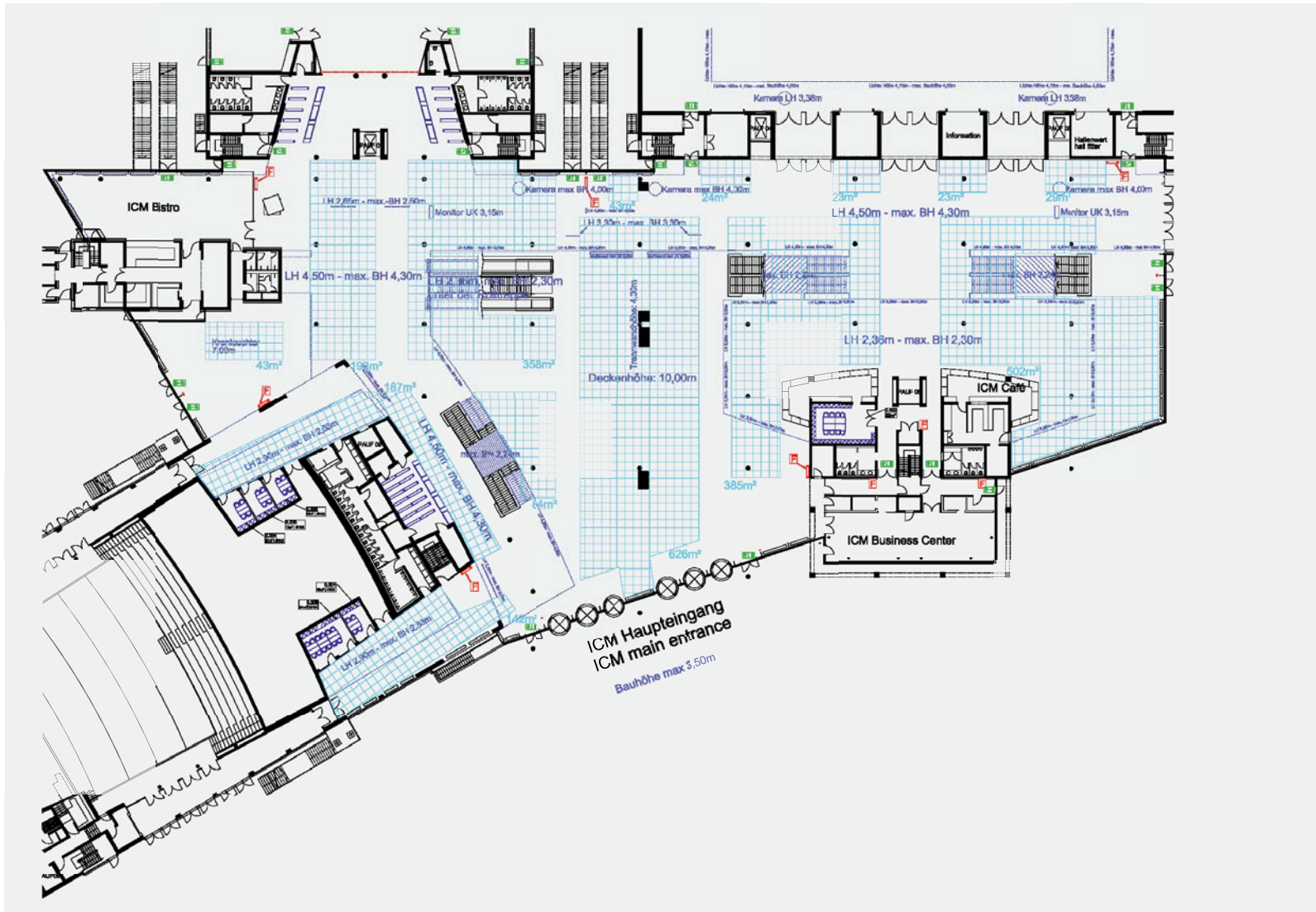
Extinguisher 
Escape route 

Last update: 22.06.2012

Disclosure to third parties only permitted with written authorization. All specifications must be independently verified on location!

ICM – Internationales Congress Center München

FOYER EG: 2,000 VISITORS INCL. BUILDING HEIGHT




Visitors	Area* in m ²
2,000	2,644

* As emergency escape routes, all remaining space must be kept clear at all times.

Exhibition Terms and Conditions:

- Exhibition layout with sufficient emergency aisles between the hatched areas
- Corridors at least every 10 meters and at least 2 meters wide
- Fire extinguishing equipment and emergency escape routes must be kept clear at all times, even during setup and dismantling
- Dimensions must be independently verified on location



Extinguisher 
 Escape route 




Last update: 22.06.2012

Disclosure to third parties only permitted with written authorization. All specifications must be independently verified on location!

ICM – Internationales Congress Center München

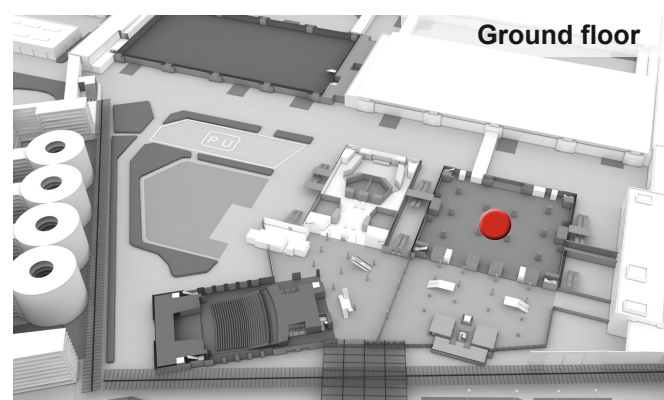
DETAILS HALL B0

including technical specifications

Areas/rooms	Area in m ²	 Theater	 Classroom	 Banquet
Hall B0	3,500	on request	on request	on request

The central multifunctional hall

Hall B0 offers 3,500 m² of multi-purpose usage options for up to 1,500 people. With the entire infrastructure of an exhibition hall, hall B0 is suitable for your exhibitions and caterings with short distances as well as stylish gala dinners. All necessary connections for electricity, water, telecommunications and data transmission are available. Hall B0 combines perfectly with our stylish lobby. Both rooms feature very high-quality materials.

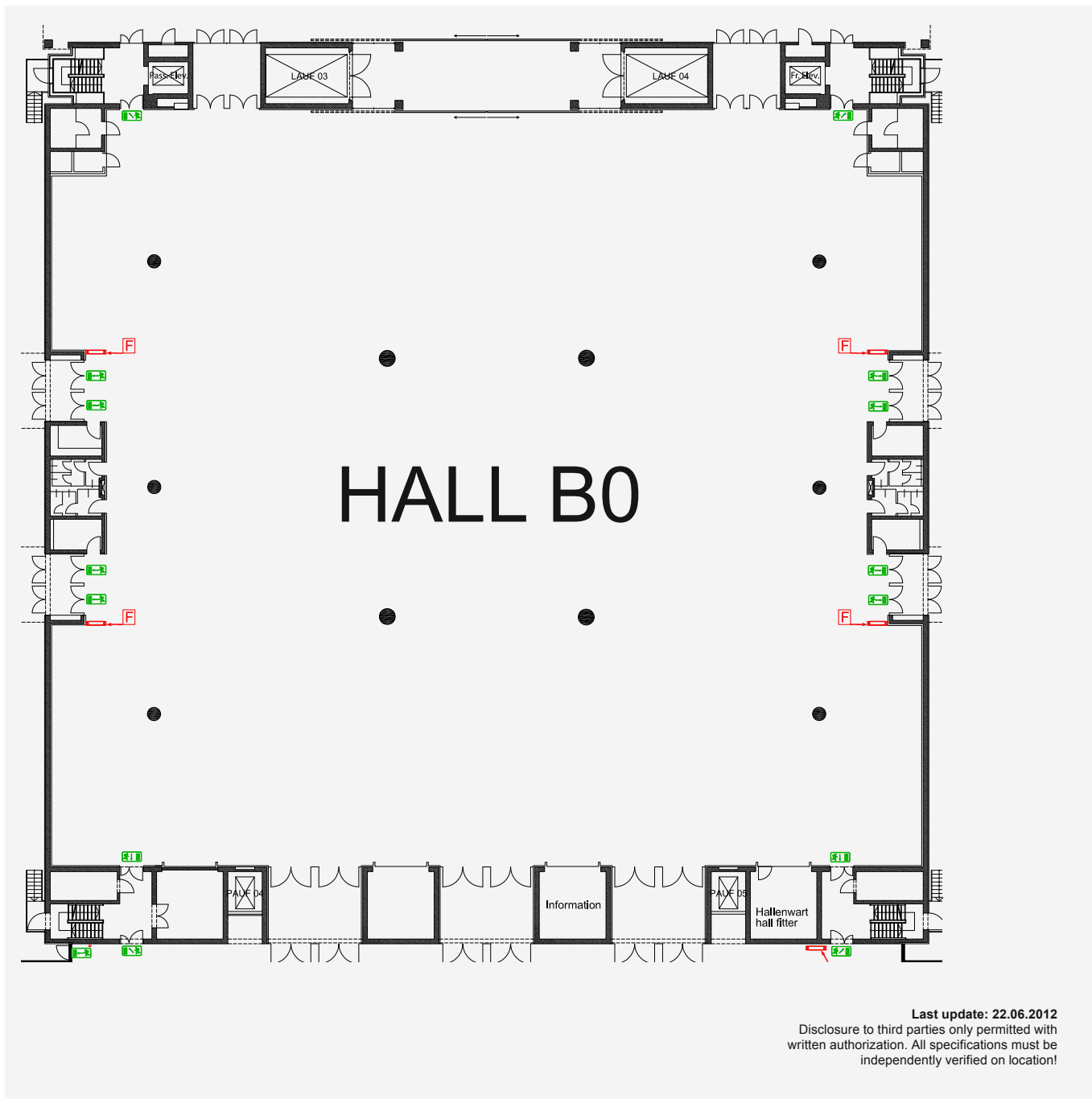


Specifications

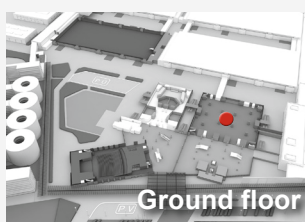
Location	<ul style="list-style-type: none"> Direct vehicle access for deliveries Vehicles may not drive into the hall itself Forklifts may only be used by the exhibition center's freight forwarder The maximum load-bearing capacities of the passenger and freight elevators must be observed at all times
Suitable for	<ul style="list-style-type: none"> Exhibitions, catering
Size/capacity	<ul style="list-style-type: none"> 3,500 m²
Special features	<ul style="list-style-type: none"> Length 65 m, width 54 m Suitable exhibition space: approx. 2,500 m² Clearance height: 4 m Walls: wood paneling Floors: oak timber parquet Permissible point load, 30 cm x 30 cm: 6 t (60 kN/m²) Suspension points in hall: 100 kg (1 kN) vertical, permanent grid approx. 5.10 m x 2.75 m Loading gates, size: 12.50 m wide x 4.50 m high Loading gates, number: 1, via gate 21 Permissible floor load: 2.0 t/m² (20 kN/m²)
Utilities	<ul style="list-style-type: none"> Lighting: 400 Lux/m² Ventilation system: partially air-conditioned Utility ducts: diagonal to longitudinal direction of hall, spacing 5 m, cross section 35 cm x 38 cm Water connection: DN 25/3.5 bar Waste water connection: DN 100 Compressed air connection: DN 50/10 bar Electricity: Up to 85 kW per connection (125 A CEE) Up to 40 kW per connection (63 A CEE) Telecom system connections: analog telephone/fax External telecom connections: ISDN, T-DSL 1000/2000 Network: Ethernet/RJ-45 static IP Cable television connections: available

ICM – Internationales Congress Center München

HALL B0: EMPTY



Last update: 22.06.2012
Disclosure to third parties only permitted with written authorization. All specifications must be independently verified on location!



F Extinguisher
EXIT Escape route

Area in m²

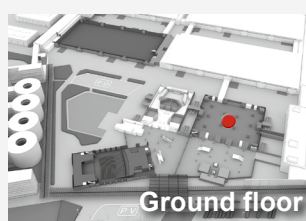
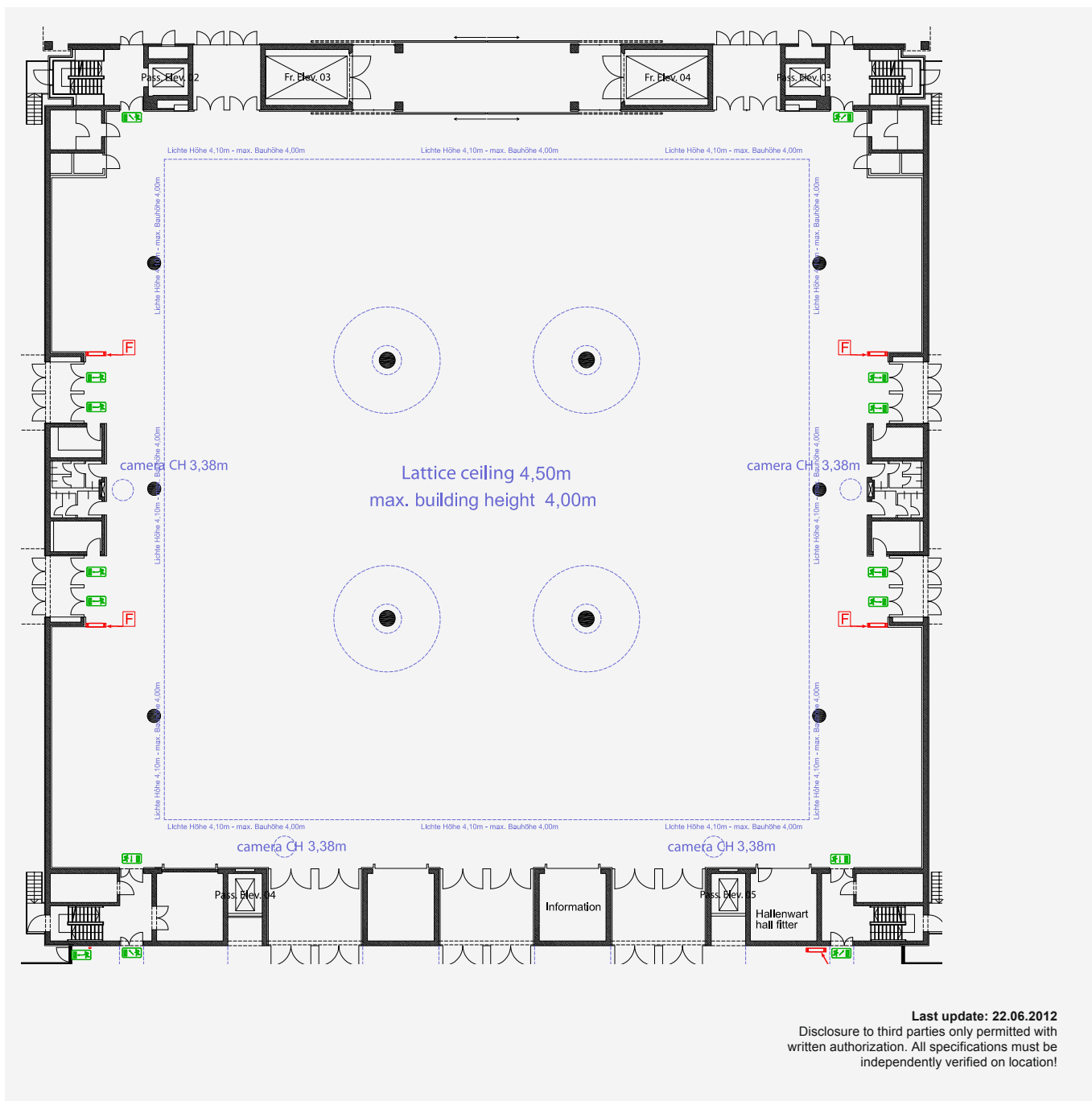
3,500

Exhibition Terms and Conditions:

- Exhibition layout with sufficient emergency aisles between the hatched areas
- Corridors at least every 10 meters and at least 2 meters wide
- Fire extinguishing equipment and emergency escape routes must be kept clear at all times, even during setup and dismantling
- Dimensions must be independently verified on location

ICM – Internationales Congress Center München

HALL B0: EMPTY INCL. BUILDING HEIGHT



F Extinguisher
E Escape route

Area in m²

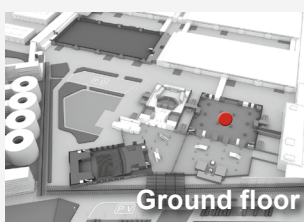
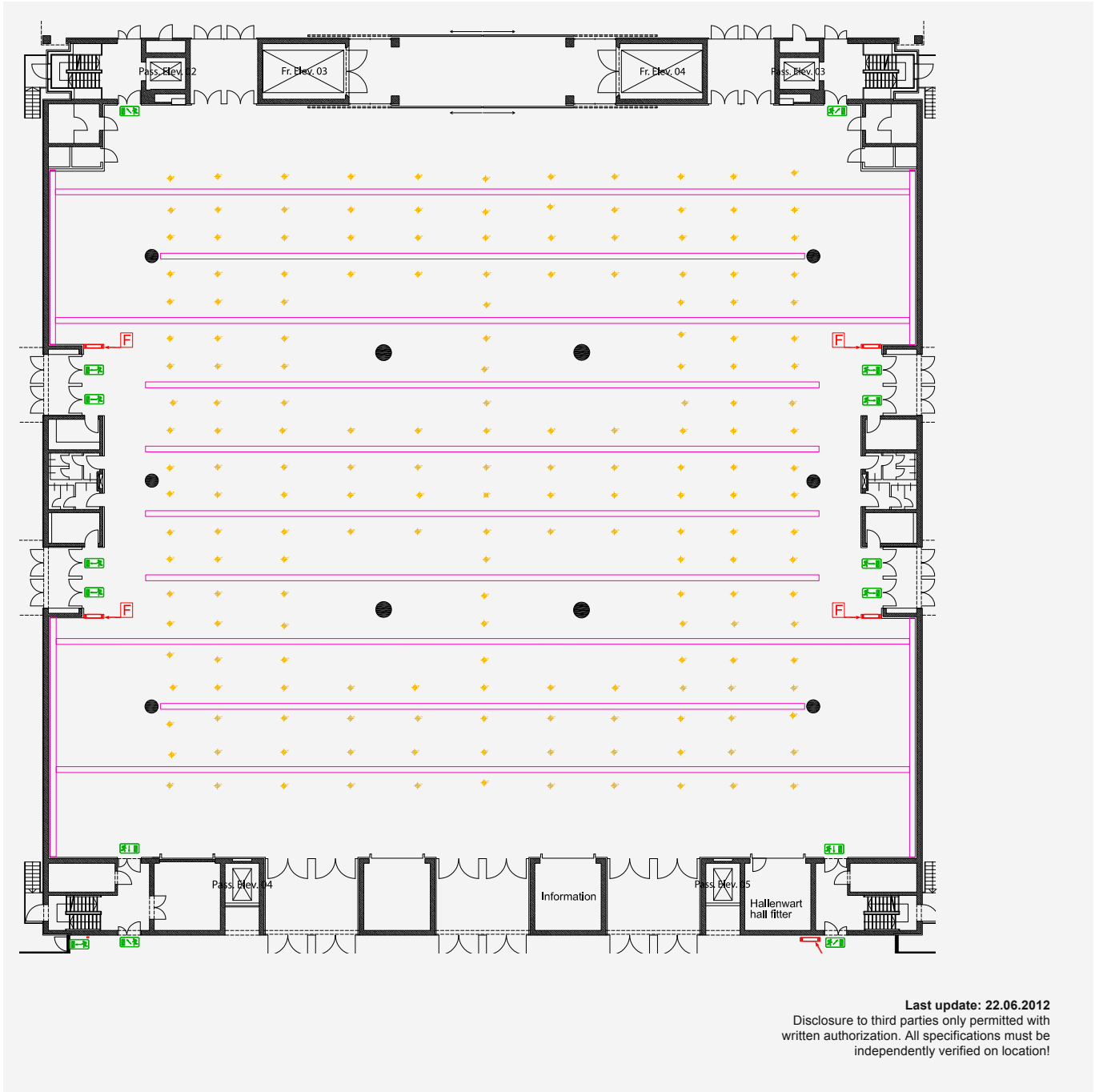
3,500

Exhibition Terms and Conditions:

- Exhibition layout with sufficient emergency aisles between the hatched areas
- Corridors at least every 10 meters and at least 2 meters wide
- Fire extinguishing equipment and emergency escape routes must be kept clear at all times, even during setup and dismantling
- Dimensions must be independently verified on location

ICM – Internationales Congress Center München

HALL B0: SUSPENSION POINTS UTILITY DUCTS



F Extinguisher
→ Escape route

Area in m²

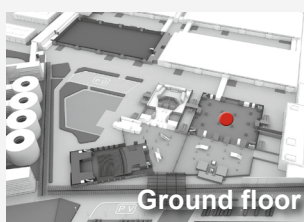
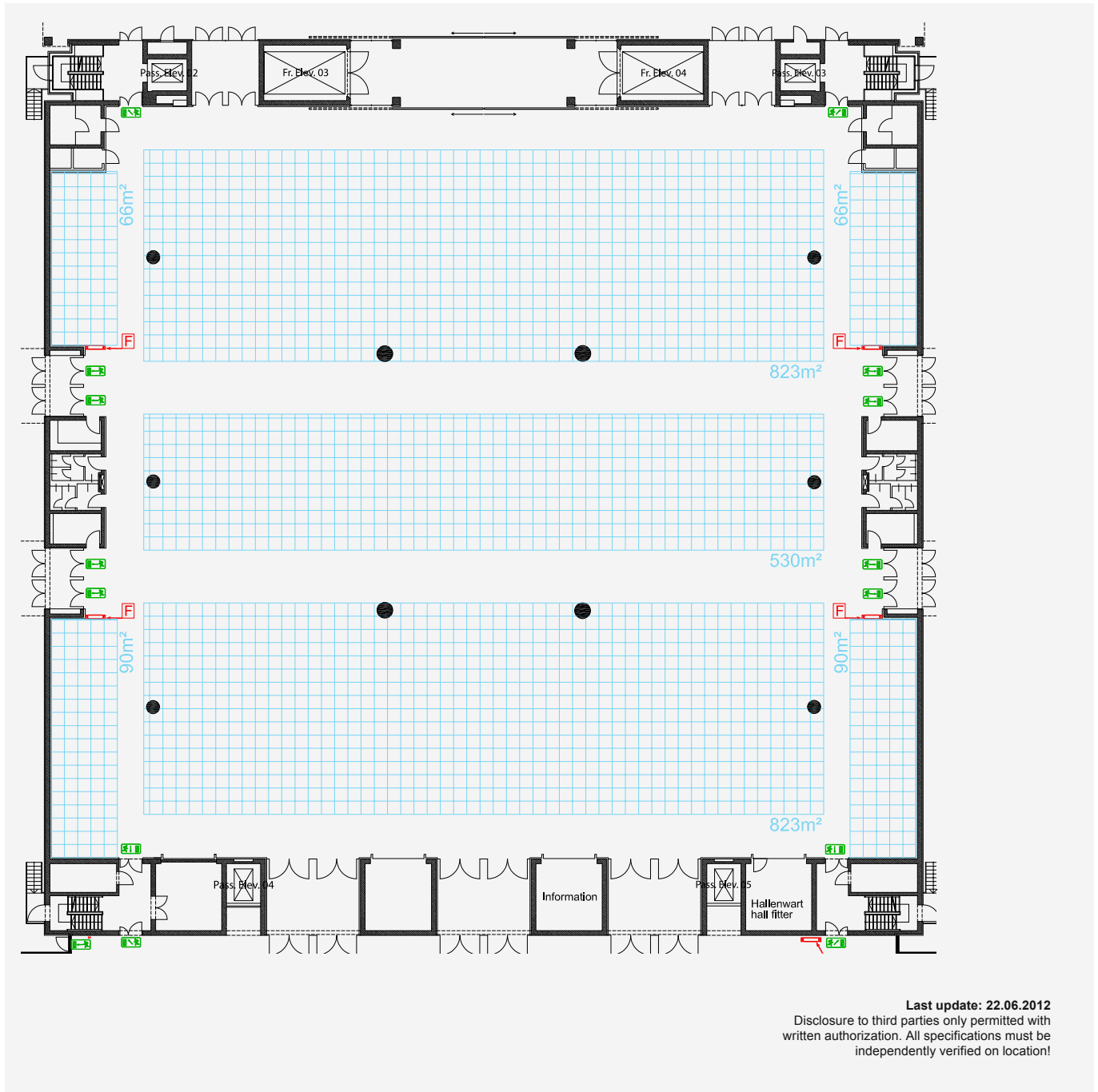
3,500

Exhibition Terms and Conditions:

- Exhibition layout with sufficient emergency aisles between the hatched areas
- Corridors at least every 10 meters and at least 2 meters wide
- Fire extinguishing equipment and emergency escape routes must be kept clear at all times, even during setup and dismantling
- Dimensions must be independently verified on location

ICM – Internationales Congress Center München

HALL B0: BUILDABLE SPACE



F Extinguisher
→ Escape route

Area in m²
2,488

- Exhibition Terms and Conditions:**
- Exhibition layout with sufficient emergency aisles between the hatched areas
 - Corridors at least every 10 meters and at least 2 meters wide
 - Fire extinguishing equipment and emergency escape routes must be kept clear at all times, even during setup and dismantling
 - Dimensions must be independently verified on location